

## AC Mode Probes

This data sheet summarizes the basic physical and dimensional specifications for AC Mode Probes. These probes can be used on any commercial AFM to perform standard contact mode imaging. You may also optimally use them with the DPN 5000 System or NSCRIPTOR™ DPN System.

Parameter	Spring Constant (N/m)	Frequency (kHz)	Length (μm)	Width (μm)	Thickness (μm)
Nominal	40	300	125	35	4.5
Minimum	25	200	115	30	4.0
Maximum	75	400	135	40	5.0

### Tip Specifications

- Shape: Pyramidal
- Height: 14-16 μm
- Tip radius: <10 nm
- Coating: None

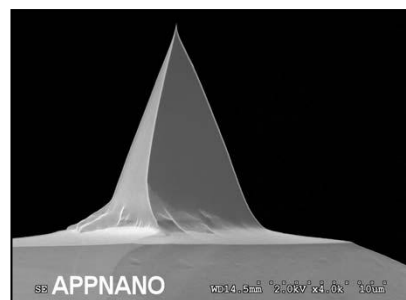


Figure 1: Tip of the AC Mode Probe.

### Cantilever Specifications

- Material: Silicon (Si)
- Shape: Rectangular
- Front coating: None
- Reflex side coating: None



Figure 2: Top view of the AC Mode Probe.

Item Name: Probes, AC Mode

Part #: PEN-0005-01

Compatible with the DPN 5000 System, and NSCRIPTOR™ DPN System

Learn more about NanoInk products and services at [www.nanoink.net](http://www.nanoink.net). Or call us at 847-679-NANO (6266).